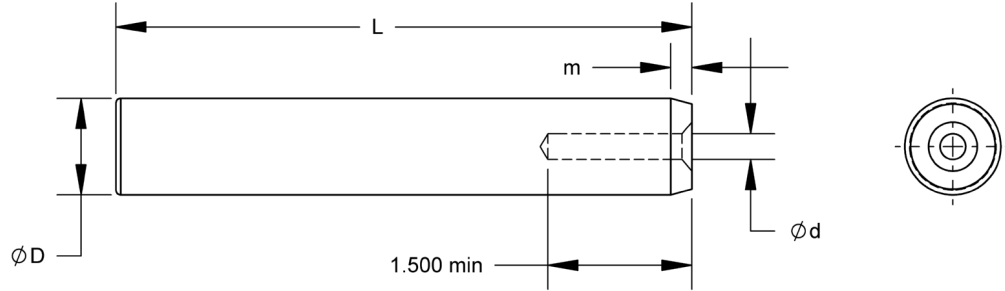


Case Hardened to 60 - 64 Rc



L	Diameter (D)						
	1	1 1/4	1 1/2	1 3/4	2	2 1/2	3
3.25	P17.008.013						
3.75	P17.008.015						
4.25	P17.008.017	P17.010.017	P17.012.017				
4.50	P17.008.018						
4.75	P17.008.019	P17.010.019					
5.00	P17.008.020		P17.012.020	P17.014.020			
5.25	P17.008.021	P17.010.021					
5.50	P17.008.022	P17.010.022					
5.75	P17.008.023	P17.010.023	P17.012.023	P17.014.023	P17.016.023		
6.00	P17.008.024	P17.010.024	P17.012.024				
6.50	P17.008.026	P17.010.026	P17.012.026	P17.014.026	P17.016.026		
7.00	P17.008.028	P17.010.028	P17.012.028	P17.014.028			
7.25					P17.016.029		
7.50	P17.008.030	P17.010.030	P17.012.030	P17.014.030	P17.016.030		
7.75					P17.016.031		
8.00	P17.008.032	P17.010.032	P17.012.032	P17.014.032	P17.016.032	P17.020.032	
8.50	P17.008.034	P17.010.034	P17.012.034	P17.014.034	P17.016.034		P17.024.034
8.75						P17.020.035	
9.00	P17.008.036	P17.010.036	P17.012.036	P17.014.036	P17.016.036		
9.25							P17.024.037
9.50			P17.012.038	P17.014.038	P17.016.038	P17.020.038	
10.00		P17.010.040	P17.012.040	P17.014.040	P17.016.040	P17.020.040	P17.024.040
10.50			P17.012.042	P17.014.042	P17.016.042		
11.00		P17.010.044	P17.012.044	P17.014.044	P17.016.044	P17.020.044	P17.024.044
11.50			P17.012.046	P17.014.046	P17.016.046		
12.00		P17.010.048	P17.012.048	P17.014.048	P17.016.048	P17.020.048	P17.024.048
12.50			P17.012.050	P17.014.050	P17.016.050		
13.00			P17.012.052	P17.014.052	P17.016.052	P17.020.052	P17.024.052
14.00			P17.012.056	P17.014.056	P17.016.056	P17.020.056	P17.024.056
15.00				P17.014.060	P17.016.060		
16.00					P17.016.064		
17.00				P17.014.068	P17.016.068	P17.020.068	P17.024.068
18.00					P17.016.072	P17.020.072	
20.00						P17.020.080	P17.024.080
d	1/4 NC	5/16 NC	3/8 NC	3/8 NC	1/2 NC	5/8 NC	5/8 NC
m	0.22						